



EDUCATION & RETREAT CENTER

Earth-Honoring Faith

A ten-year commitment, the goal of which is to construct justice-centered, Earth-honoring Christianities that promote interfaith efforts on common earth issues. The 2014 theme is *Listening to Earth, Opening to God*.

About Ghost Ranch

Ghost Ranch, 21,000 acres located in Northern New Mexico, is an ecumenical and interfaith education and retreat center of the Presbyterian Church (USA). For over half a century, people have come here for spiritual development, to discuss issues of peace and justice, to work together in creation care, to paint and write, to hike and to ride horseback, to research rich and globally renowned archeological and fossil quarries, to see where Georgia O'Keeffe painted, to try something new or to simply rest and renew their spirits.

REGISTER ONLINE



@GhostRanch.org or call the Registrar Office at 505.685.1001 or 505.685.1002

- Workshop #: G14S641
- \$395 + 6 nights lodging & meals

Brian Spencer



Listening to Earth, Opening to God

Monday, June 23–Sunday, June 29, 2014

What are Earth's voices saying to us? How do we listen? And how do we respond so as to celebrate life, embrace hope, and work together for Earth care and self-care on an endangered planet? Women's experience and voices will be highlighted—Native-American, African-American, Anglo-American and Latina-American. Men's voices will join. Presentations, conversations, contemplative practices, art, prayer and ritual come together in this retreat facilitated by Larry Rasmussen.

INSTRUCTORS:



Neddy Astudillo is an eco-theologian and PC(USA) pastor with a Doctor of Ministry degree on "Greening the Church" from Drew University. Neddy, a Venezuelan-American, is co-founder of the Angelic Organics Learning Center, a farm-based educational nonprofit.



Melanie L. Harris teaches Christian social ethics, womanist ethics, African-American religious and eco-spirituality at Texas Christian University. A former broadcast journalist, Dr. Harris is the author of *Gifts of Virtue: Alice Walker and Womanist Ethics* and is currently writing a book engaging women's contributions to eco-justice. She is ordained in the African Methodist Episcopal Church.



Mary Ann Lundy, is retired from positions in the Presbyterian Church (USA) and in the World Council of Churches. She was one of the originators of the Reimagining Conference held in Minneapolis in 1993, which stirred wide controversy about women's theology.



Janet Parker is Pastor for Parish Life at Rock Spring Congregational United Church of Christ in Arlington, Va. Her work in Christian Ethics includes indigenous world-views and struggles for sustainability, sovereignty and land. Currently she provides leadership for people of faith fighting mountaintop removal mining and climate change.



EDUCATION & RETREAT CENTER

REGISTER ONLINE



@GhostRanch.org or call the
Registrar Office at 505.685.1001
or 505.685.1002

- Workshop #: G14S641
- \$395 + 6 nights lodging & meals

Tammeus



Listening to Earth, Opening to God



Nicole Salimbene is a visual artist, working with unconventional materials to explore themes of sustainability, spirituality and archetypal poetics. She leads workshops in environmental and contemplative art making practices in affiliation with American University, Clark University, the Lama Foundation and a variety of community and professional organizations.



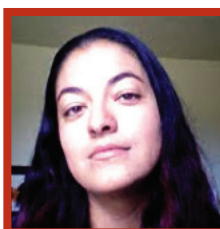
Kathy Wan Povi Sanchez, a Tewa from San Ildefonso Pueblo, NM, is a community educator and potter. Currently, Kathy is the Environmental Health and Justice program manager of Tewa Women United (TWU), a gathering of intertribal women advocating for positive social changes, in ending racism, and to stop nuclear terracide of our mother earth. She advocates for rekindled nurturing of women's leadership and entrepreneurial skills. Visit tewawomenunited.org



Lindsey Schneider is a two spirit, mixed race descendant of the Pembina band of Turtle Mountain Chippewa (Anishinaabe) Indians and of Scandanavian settlers. Growing up in the Pacific Northwest instilled in her a fierce love of the land and respect for its original peoples. After receiving a B. A. in Religious Studies at Willamette University, she spent a year with the Lutheran Volunteer Corps working on environmental justice issues at the Pesticide Action Network. She is now a Ph. D. candidate in Ethnic Studies.



Chandra Taylor Smith is the former Vice President for Research at the Council for Opportunity in Education and Director of The Pell Institute for the Study of Opportunity in Higher Education, Chandra Taylor, is the National Audubon's Vice President for Community Conservation and Education. She is ordained in the Progressive Baptist tradition.



Beata Tsosie-Peña, from Española, NM, is an active community organizer, advocate and educator, as well as a local dancer, poet and artist. Beata currently facilitates Environmental Health and Justice Focus groups for Tewa Women United and instructs poetry and writing workshops for teen groups in the Española and Santa Fe, New Mexico school districts.